

# Item 4c

## Barnsley Children in Care (CiC) Provisional Education Outcomes 2015

### Executive Summary:

- The following report provides an analysis of outcomes for children looked after by Barnsley who took tests and examinations at all key stages.
- In all years the size of cohort used for national reporting remains small with the year 11 cohort being the smallest at the end of key stage 4 for some years.
- In 2015 attainment of Barnsley CiC is in line with 2014 LAC (Looked After Children) national averages at the end of KS1 and KS4. Attainment at the end of KS2 is below the 2014 attainment of LAC nationally. Overall, attainment of Barnsley CiC is considerably below the attainment of all pupils both nationally and in Barnsley and as such below the aspirations we have for these children.
- The proportion of Barnsley CiC making at least expected progress is in line with the 2014 LAC national average for KS2 pupils in writing and maths. Progress in reading KS1-2 and English and maths KS2-4 is below the 2014 LAC national average, considerably below progress rates for all pupils both nationally and locally and below our aspirations for this group of pupils.

### Key definitions:

**Whole cohort:** Refers to the cohort of all pupils looked after by Barnsley at the end of the 2014/15 academic year in each year group.

**SFR cohort:** Refers to the cohort of all pupils looked after by Barnsley on 31<sup>st</sup> March 2015 having been in care continuously for the previous 12 months in each group. This cohort is used in the national statistics published in documents entitled Statistical First Releases (SFR). This cohort is the one that should be used when comparing with the performance of looked after children nationally.

**In line:** In small cohorts, local authority performance is deemed to be in line with the national figure when it is around the national average as it falls within (plus or minus) the percentage value of one pupil of the local authority cohort.

**Out of authority (OOA)** Refers to a child who is looked after by Barnsley Council but is educated outside of the authority

**Special Educational Needs (SEN)** **Support:** Children who are identified as having Special Educational Needs (SEN) includes and who receive additional support at school but do not have a statement or Education, Health and Care Plan (EHCP)

**Status** **EHCP:** Children who have been assessed and for whom a statutory Education, Health and Care Plan has been issued defining their additional needs and appropriate support. Under the SEN reforms EHCPs replace statutory SEN statements.

**Statement:** Children who were issued with an SEN statement prior to the reforms. Over time all existing statements will be transferred to the new EHCP.

## Barnsley CiC End of EYFS Outcomes: 2015

### Early Years Foundation Stage (EYFS) cohort profile 2015:

- 5 pupils had been continuously in care for 12 months or more on the 31<sup>st</sup> March 2015.
- Of this cohort of 5:

	Gender		Setting	
	boys	girls	BMBC	OOA
N <sup>o</sup>	4	1	2	3
%	80%	20%	60%	40%

- Due to the small size of the SFR cohort, each pupil is worth 20%.

### 2015 end of EYFS Achievement:

Of the results for a total of 5 children:

- 2 children (40%) achieved a good level of development, making expected development in all key areas of the curriculum. This is below the proportion of pupils both nationally and in Barnsley
- 3 children (60%) failed to make a good level of development:
  - 1 child made expected development in a number of areas but was judged emerging in numeracy, understanding of the world, and creativity
  - 2 children were judged to be emerging in all areas
- Historically, the overwhelming majority of the children looked after by Barnsley end EYFS below expected levels of development.

## Barnsley CiC End of KS1 Outcomes: 2015

### Year 2 cohort profile 2015:

- In July 2015, 13 year 2 pupils were placed in Barnsley Corporate Care
- Of these, 5 pupils had been continuously in care for 12 months or more on the 31<sup>st</sup> March 2015 and as such, these 5 pupils form the S cohort used in the national data releases
- Of this SFR cohort of 5:

	Gender		SEN status			School		
	boys	girls	Support	EHCP	Statement	BMBC	OOA	Special School
Nº	3	2	0	2	2	3	2	0
%	60%	40%	0%	40%	40%	60%	40%	0%

- The proportion of Barnsley CiC with SEN (Special Educational Needs) is in line with the 2014 national average for looked after children
- Due to the small size of the SFR cohort, each pupil is worth 20%.

### 2015 end of KS1 Attainment:

- Of the whole cohort of 13:

		2015 Actual Attainment			
		Reading	Writing	Maths	RWM
L2+	Nº	9	9	10	9
	%	69.2%	69.2%	76.9%	69.2%
L3	Nº	1	2	0	0
	%	7.7%	15.4%	0%	0%

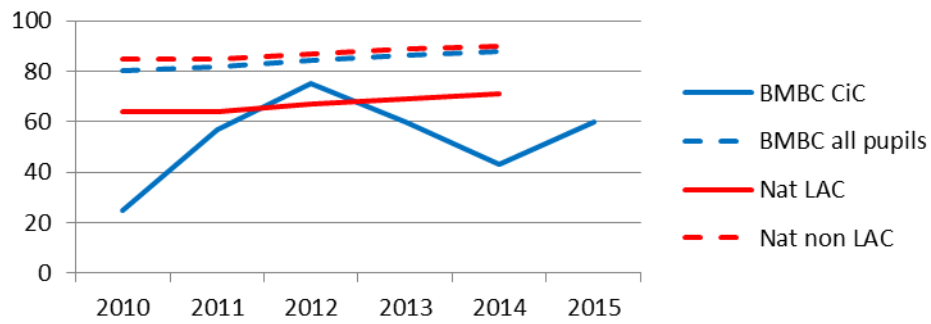
- Of the SFR cohort of 5:

		2015 Actual Attainment				2015 projections		
		Reading	Writing	Maths	RWM	Reading	Writing	Maths
L2+	Nº	3	3	4	3	3	3	3
	%	60%	60%	80%	60%	60%	60%	60%
L3	Nº	0	1	0	0	0	0	0
	%	0%	20%	0%	0%	0%	0%	0%
<b>2014 LAC National ave. %L2+</b>		71%	61%	72%	Not published			

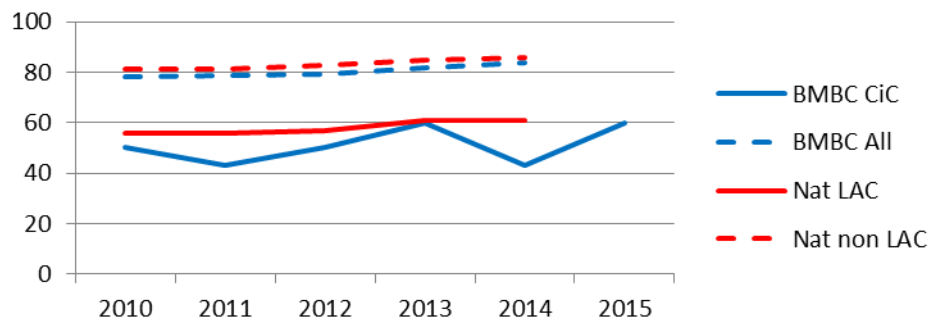
- Due to the small cohort size, attainment at the end of Key Stage 1 is in line the 2014 national averages for Looked After Children in reading and writing.
- Attainment in reading and writing is below the national and Barnsley average for all pupils.
- Attainment in maths is broadly in line with the national average for all pupils.
- All children in the SFR cohort achieved outcomes in reading and writing in line with previously returned data from schools as part of the data collections for the virtual school.
- 1 pupil reached age expectation in maths who previously had not been projected to do so. This success occurred at the same time as his placement for adoption resulted in him in moving away from Barnsley and starting a new school.
- Attainment in reading and writing for 2015 marks a return to previous levels of attainment for looked after children being in line with the LAC national average but below the performance of all pupils.

**KS1 Attainment trends over time:**

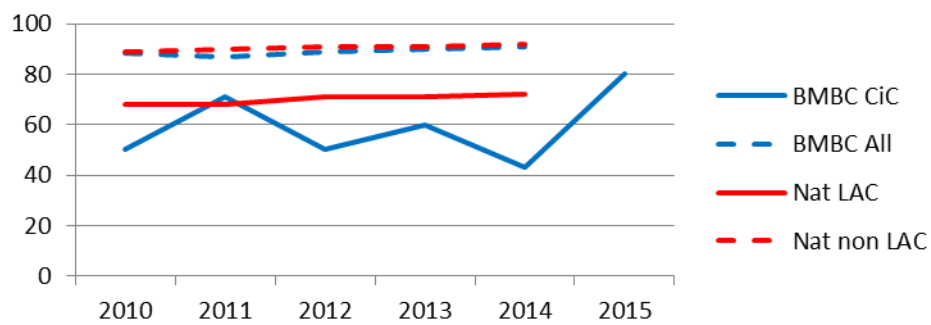
**%L2+ reading**



**%L2+ writing**



**%L2+ maths**



## Barnsley CiC End of KS2 Outcomes: 2015

### Year 6 cohort profile 2015:

- In July 2015, 14 year 6 pupils were in Barnsley Corporate Care
- Of these, 10 pupils had been continuously in care for 12 months or more on the 31<sup>st</sup> March 2015 and will form the SFR cohort used in the national data releases
- Of this SFR cohort of 10:

	Gender		SEN status			School		
	boys	girls	Support	EHCP	SEN	BMBC	OOA	Special
N <sup>o</sup>	7	3	4	4	8	8	2	2
%	70%	30%	40%	40%	80%	80%	20%	20%

- The proportion of Barnsley CiC with SEN is above the 2014 national average for looked after children
- Due to the small size of the SFR cohort, each pupil is worth 10%.

### Prior attainment at the end of KS1:

- Of the SFR cohort of 10:

		Reading	Writing	Maths	RWM
L2+	N <sup>o</sup>	2	2	2	2
	%	22.2%	22.2%	22.2%	22.2%
L3	N <sup>o</sup>	1	0	0	0
	%	11.1%	0%	0%	0%

- One child has no KS1 outcomes recorded on the National database. Percentages above are out of the cohort of 9 with prior attainment data.
- When these 9 children ended key stage 1, four years ago, the proportion achieving age expectations was below the proportion of looked after children nationally
- One child achieved above age expectations in reading

### 2015 end of KS2 Attainment:

- Of the whole cohort of 14:

		2015 Actual Attainment			
		Reading	Writing	Maths	RWM
L4+	N <sup>o</sup>	8	7	8	7
	%	57.1%	50%	57.1%	50%
L5+	N <sup>o</sup>	3	1	1	3
	%	21.4%	7.1%	7.1%	30%

- Of the SFR cohort of 10:

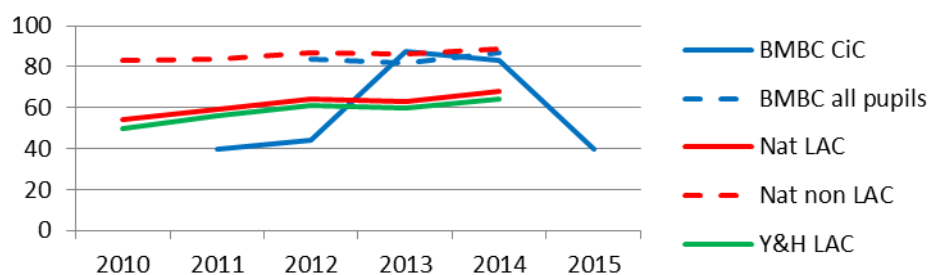
		2015 Actual Attainment				2015 projections		
		Reading	Writing	Maths	RWM	Reading	Writing	Maths
L4+	N <sup>o</sup>	4	3	4	3	2	2	2
	%	40%	30%	40%	30%	20%	20%	20%
L5+	N <sup>o</sup>	2	1	1	1	2	1	0
	%	20%	10%	10%	10%	20%	10%	0%
<b>2014 LAC National ave. %L4+</b>		68%	59%	61%	48%			

- Outcomes in all three areas for Barnsley's SFR cohort are below the 2014 LAC national averages and the performance of all pupils both nationally and in Barnsley.

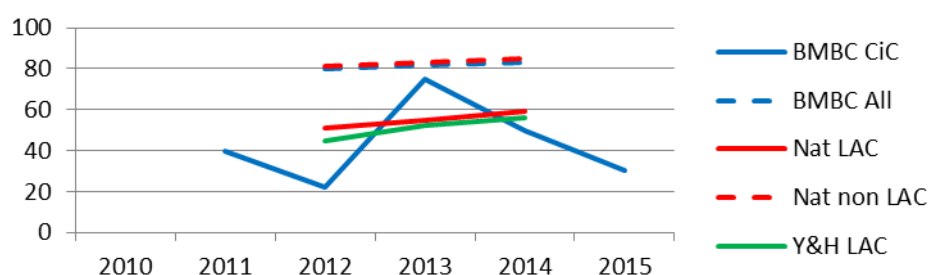
- Outcomes for Barnsley CiC in 2015 are above the projections returned by schools as part of the April data collection of the virtual school.
- Pupils projected to achieve level 4 or better did so.
- Virtual school discussions with schools regarding revised use of Pupil Premium Plus following the April data collection contributed to one child achieving level 4 in all areas and further pupil doing so in reading and maths. In both cases original projections had been for the pupils to achieve level 3s.
- One child achieved above age expectations in all areas

### KS2 Attainment trends over time:

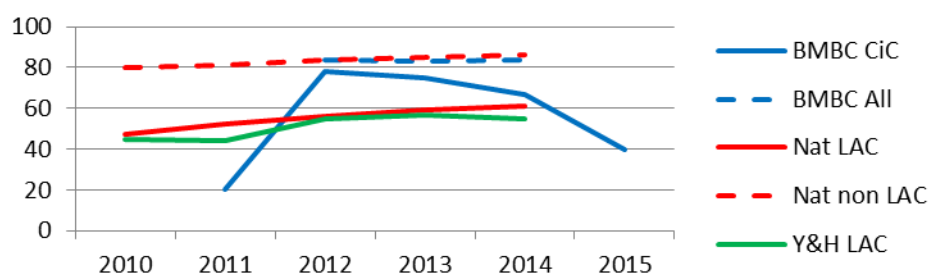
#### %L4+ reading



#### %L4+ writing



#### %L4+ maths



- As predicted, the lower prior attainment of pupils in the 2015 cohort has resulted in downward trends in all three subjects.

### 2014 KS1-2 Progress:

- Of the SFR cohort of 10:

		Reading	Writing	Maths
Expected progress or better	Nº	5	7	7
	%	50%	78%	78%
Better than expected progress	Nº	2	3	2
	%	20%	33.3%	22.2%
2014 LAC Nat ave. Expected progress or better	%	81%	82%	75%

## Evaluation of progress:

- All Barnsley CiC for whom progress can be calculated made at least expected progress in writing and maths and the majority did so in reading.
- The proportion of Barnsley CiC for whom progress can be calculated, who made expected progress KS1-2 in writing and maths in 2015 sustained 2014 performance being in line with the national average for LAC but below all pupils both in Barnsley and nationally.
- The pupil with no prior attainment data achieved level 5 in reading allowing his inclusion in the progress calculations.
- 5 pupils made at least expected progress in all subjects.
- A number of pupils made greater than expected progress KS1-2
- 2 statemented pupils attended special schools and have been working below National Curriculum levels for most or all of the key stage. Department for Education (DfE) methodology for calculating progress does not reflect DfE's Progression Guidance materials in calculating progress for SEN pupils. Based on the Progression Guidance materials, 1 pupil's move from p4s to p8s over the key stage, and the other pupil's progress from p6s to level 1s, should both be evaluated as having made at least expected progress.
- Hence in writing and maths, all pupils for whom progress can be calculated made at least expected progress KS1-2.
- In reading, 3 non-statemented pupils failed to make expected progress in reading. All 3 had been predicted to achieve low level 3s by their schools. All 3 sat the reading test but failed to gain enough marks to be awarded a level. Conversations with schools indicate the revised structure of the reading test may have adversely affected these pupils. Previously questions in the reading test have increased in difficulty as the candidate progressed through the paper with questions relating to the lower levels being at the start. In 2015 this was not the case with questions relating to the lower levels being placed part way through the paper. As a result, schools reported pupils taking longer to complete the earlier questions having lost confidence when they arrived at questions targeted at level 3.

## Barnsley CiC End of KS4 Outcomes: 2015

### Cohort profile:

- In July 2015, 14 year 11 pupils were placed in Barnsley Corporate Care
- Of these, 9 pupils had been continuously in care for 12 months or more on the 31<sup>st</sup> March 2015 and as such, only these 9 will form the SFR cohort used in the national data releases
- Of this SFR cohort of 9:

	Gender		SEN status			School		
	boys	girls	Support	EHCP	SEN	BMBC	OOA	Special
N <sup>o</sup>	2	7	2	1	3	7	2	1
%	22.2%	77.8%	22.2%	11.1%	33.3%	77.8%	22.2%	11.1%

- The proportion of Barnsley CiC with SEN is lower than the 2014 national average for looked after children
- Due to the small size of the SFR cohort, each pupil is worth 11.1%.

### Prior attainment:

- Of the SFR cohort of 9:

		English	Maths	English & maths
L4+	N <sup>o</sup>	6	5	5
	%	66.7%	55.6%	55.6%
L5	N <sup>o</sup>	1	2	1
	%	11.1%	22.2%	11.1%

- When these 9 children ended key stage 2, five years ago, the proportion achieving age expectations was in line with the proportion of looked after children nationally
- The proportion achieving age expectations at the end of key stage 2 is higher than the proportions of previous Barnsley CiC cohorts

### End of KS4 Attainment:

- Of the whole cohort of 14:

		English	Maths	English & maths
C+	N <sup>o</sup>	2	1	1
	%	6.7%	13.3%	6.7%
A+	N <sup>o</sup>	0	0	0
	%	0%	0%	0%

	5A*-C inc Eng & Ma	5A*-C	5A*-G
N <sup>o</sup>	1	1	8
%	6.7%	6.7%	57.1%

- 5 young people in care with Barnsley are not included in the SFR cohort.
- Of these, 1 entered care towards the end of their final term in year 11 and was on roll at PRU but having had extremely poor attendance over year 11 in both mainstream and PRU provision. 2 young people entered care during the penultimate term of their year 11, 1 with attendance close to persistent absence low projected grades and the other attending special



school. The final 2 entered care during the first term of their final year. Both achieved level 1 (5+ A\*-Gs) with one gaining 3 grade Cs including a C in English.

- A further young person entered care in April 2014 and left care at the start of June 2015. He achieved 8 A\*-Cs including grade Cs in English and maths.
- Of the SFR cohort of 9:

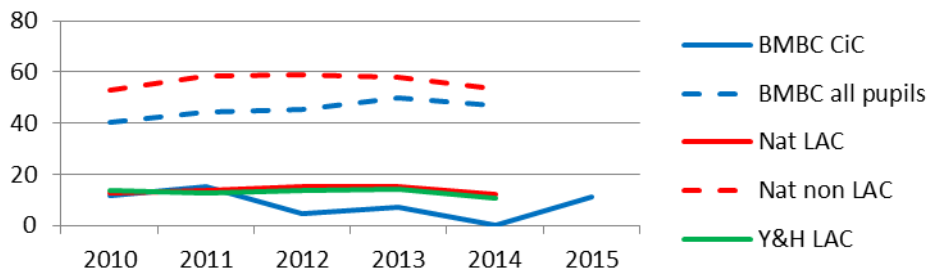
		English	Maths	English & maths
C+	Nº	1	1	1
	%	11.1%	11.1%	11.1%

			2015 projections	
			5A*-C EM	5A*-C
	5A*-C inc Eng & Ma	5A*-C	5A*-G	
Nº	1	1	6	1
%	11.1%	11.1%	66.7%	22.2%
2014 LAC Nat ave.	12%	16.3%	Not published	

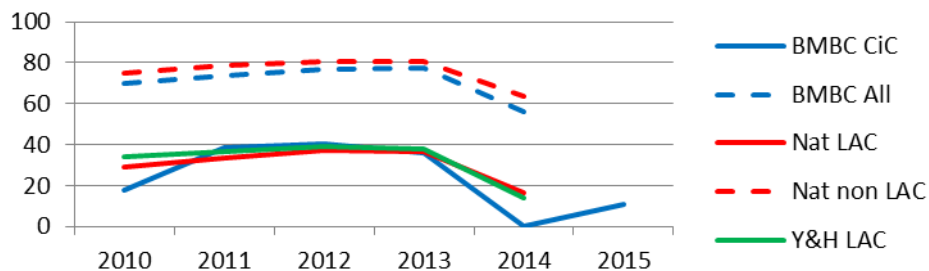
- In the SFR cohort 1 Barnsley CiC achieved 5A\*-C including Eng & maths. Given the size of the cohort, this places Barnsley in line with the 2014 LAC national and regional averages for both 5A\*-C including Eng & maths and 5A\*-Cs, marking a rise on recent performance.
- Attainment at the end of KS4 remains low being considerably below the attainment of all pupils both nationally and in Barnsley. This outcome is particularly disappointing given the prior attainment of a number of this cohort at the end of KS2.
- In the SFR cohort, the proportion of Barnsley CiC achieving 5A\*-G dropped from previous years but remains above the last reported figure for LAC nationally in 2010.
- These outcomes reflect the projections arising from data provided by schools as part of virtual school data collections but are below what should have been achieved given the prior attainment of the pupils.
- As reported through termly monitoring reports of the virtual school, of the 5 pupils who left KS2 with level 4 of better in both English and maths:
  - 1 young person successfully achieved 5A\*-C including English and maths having changed schools in the summer term of year 10.
  - 1 had a long term placement breakdown occur over the summer of 2014 followed by a series of subsequent placement breakdowns. This unsettlement impacted greatly on her education resulting in a number of exclusions as she struggled to come to terms with the events of the summer. With her facing permanent exclusion from school, alternative provision was agreed with Barnsley College due to the incompatibility of her GCSE syllabuses with those offered by Barnsley schools. Further placement breakdowns ensued and whilst provision was made for her sit five of her GCSEs, she only attended one of the exams.
  - 1 suffered the bereavement of his carer, after illness, before Christmas. The period of illness, subsequent mourning and change of placement impacted on his work and despite a number of interventions he failed to achieve 5A\*-Cs.
  - 1 gave birth during the last academic year. Personalised plans to support her following her return from maternity leave resulted in her achieving 5A\*-Gs.

- 1 pupil achieved 10 A\*-Gs but, despite additional intervention and personalised access arrangements to offset her narcolepsy, only one grade C.
- Notably, only 3 students sat vocational qualifications (BTEC *etc.*), a drop from previous years where more than half of the cohorts have successfully studied for vocational qualifications. As in previous years, when vocational courses are studied, passes at the appropriate level are achieved.

**KS4 Attainment trends over time  
% 5A\*-C including Eng & maths**



**%5 A\*-C**



**KS2-4 Progress:**

- Of the SFR cohort of 9

		English	Maths
Expected progress	Nº	2	1
	%	25.0%	12.5%
LAC National average Expected progress	%	34.5%	26.3%

**Evaluation of progress:**

- Using DFE's methodology, the proportion of Barnsley CiC making expected progress KS2-4 is below the 2014 national average for LAC.
- The stated pupil in the cohort was dis-applied from tests at the end of key stage 2 and therefore is not included in progress measures. This young person successfully gained entry level qualifications at the end of key stage 4.

## Barnsley CiC Year 13 Outcomes: 2015

### Cohort profile:

- In July 2015, 6 year 13 pupils were placed in Barnsley Corporate Care
- Of this SFR cohort of 6:

	Gender		Setting			
	boys	girls	BMBC	OOA	Special	NEET
Nº	2	7	4	1	1	1
%	33.3%	66.7%	66.7%	16.7%	16.7%	16.7%

- Due to the small size of the SFR cohort, each pupil is worth 16.7%.

### Level of courses studied

L3 (A levels)	L3 (voc)	L2	L1	Entry level	NEET
0	1	2	1	1	1
0%	16.7%	33.3%	16.7%	16.7%	16.7%

### Outcomes

All five young people engaging in education achieved passes in their year 13 studies.